

# FRESHLY PICKED ACTIVITY



# FILL IN THE BLANK



*Hey there, my fellow farming friend!*

*Let's grow something amazing together!*

*We are going step by step to make the best crop ever!*

First off, what are we going to grow? (circle your pick!)

Mint

Greens

Carrots

Watermelon

Flowers

Sweet Potatoes

Berries

Tomatoes

Turnips

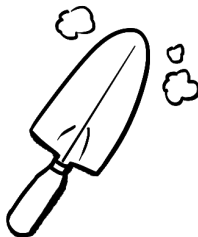
Amazing! Next up, we've got to do some digging with our

\_\_\_\_\_ .  
1. (shovel, hammer, car)

and then, we'll plant our

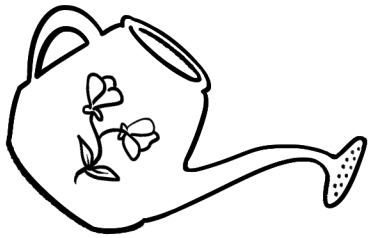
\_\_\_\_\_ .  
2. (seed, shoes, lunch)

We'll cover the hole and then help it grow.



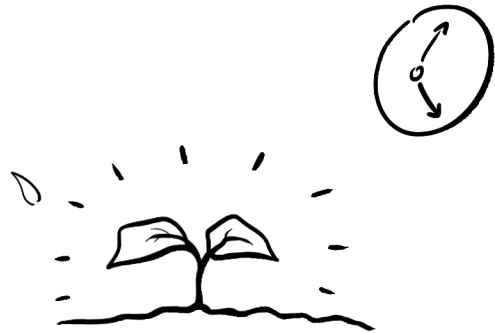
Eating your vegetables  
is very good for you!

To do that , we'll give our seed some \_\_\_\_\_ .  
3. (water, soda, orange juice)



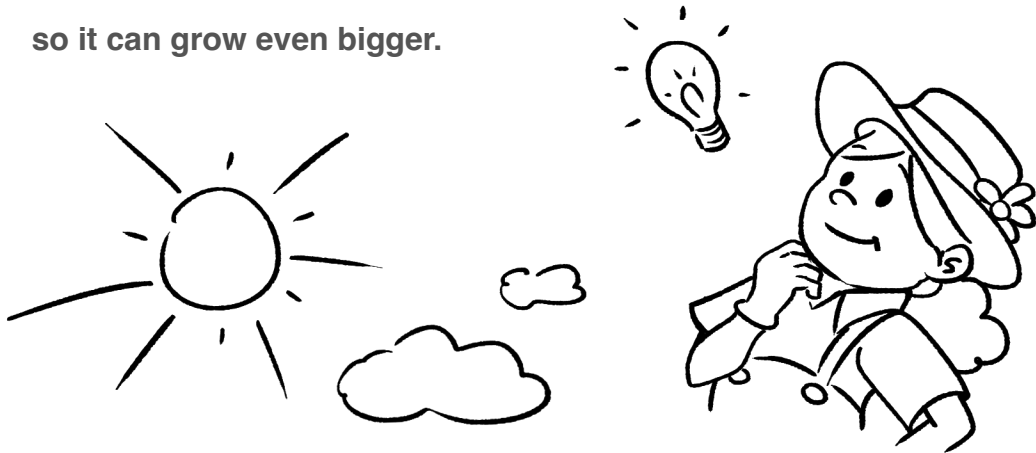
Give it some time, and before you know it,  
our plant sprouts out of the ground!

Every crop has a  
different number  
of days before it's  
ready to harvest.



You're doing a great job, partner!  
Now, our plant is going to need some \_\_\_\_\_  
4. (lightbulbs, darkness, sunlight)

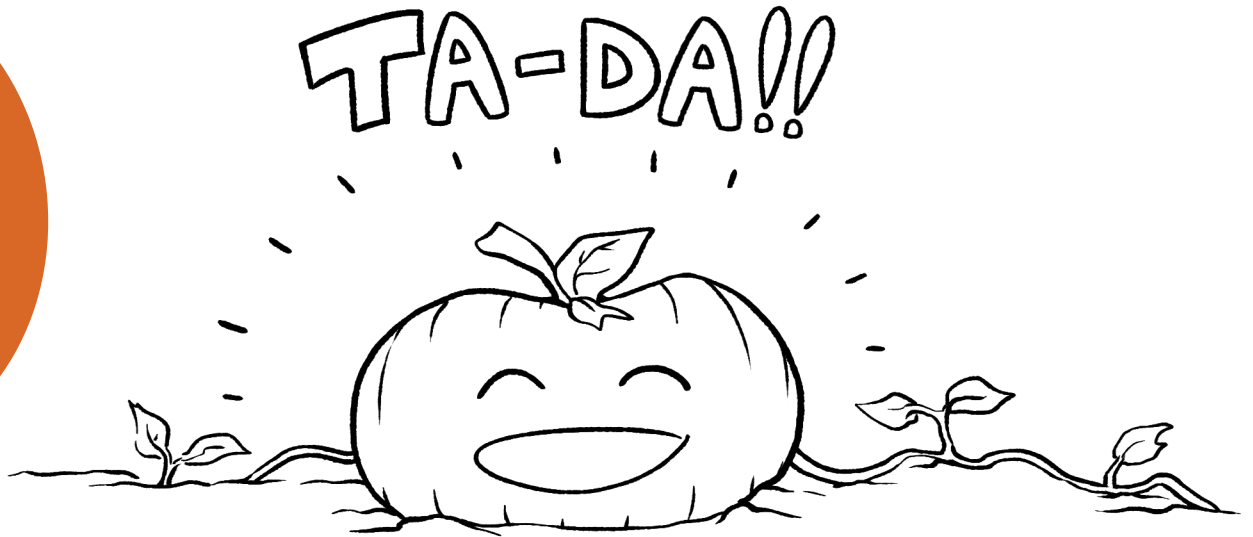
so it can grow even bigger.



The plant grows and grows with more water and sunlight.



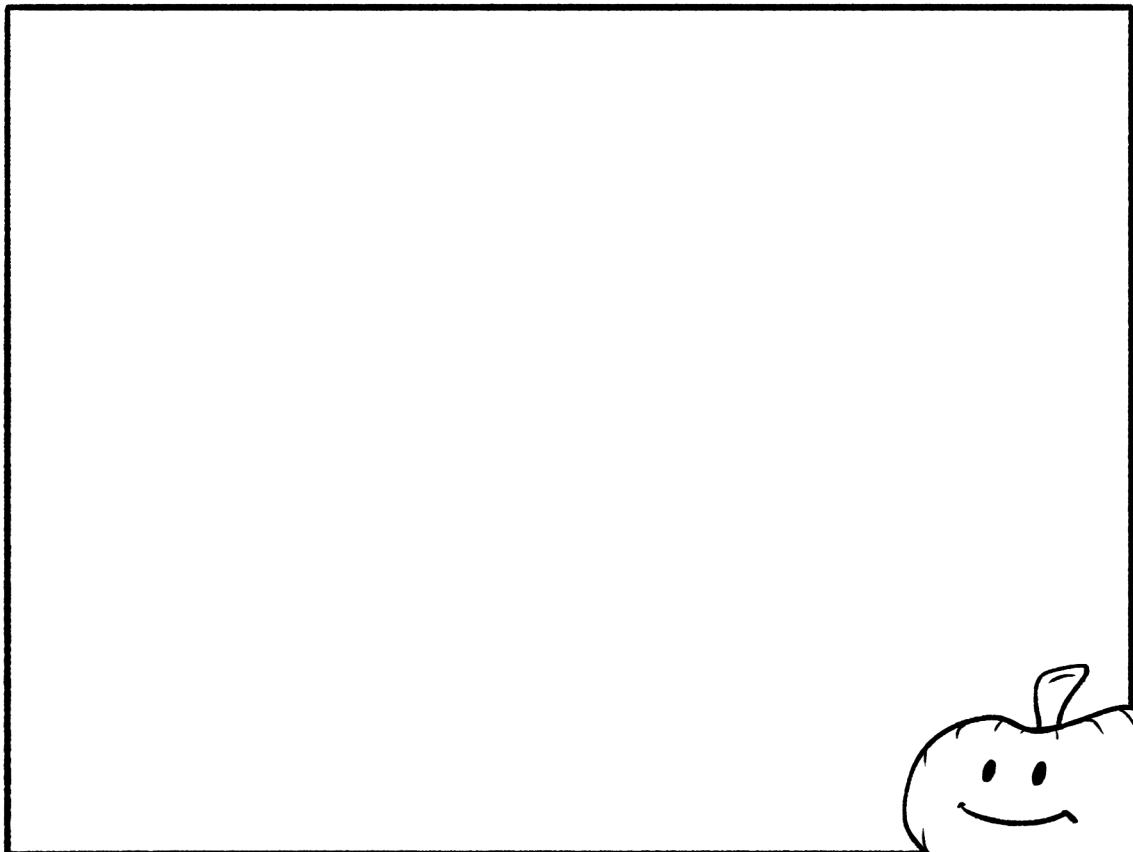
Some pumpkins can fit in your hand. Others can weigh over a hundred pounds!



The plant gives us our crop!

What does your \_\_\_\_\_ (what are we growing again?) look like?

Draw your magnificent crop below!





Farmers grow all of the vegetables we enjoy.

That looks spectacular!



Remember the steps we took when you plant your next crop.



Dig with your \_\_\_\_\_

plant your \_\_\_\_\_

give it some \_\_\_\_\_

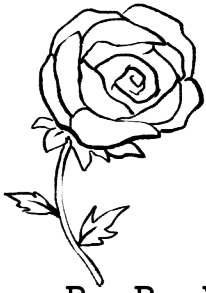
make sure it gets \_\_\_\_\_



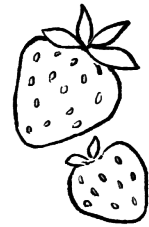
and there you go!

o You've got this my fellow farming friend!





# WORD SEARCH



## Mississippi Specialty Crops

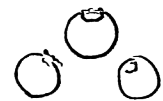
R R V M Y E N Y W X A B I N X W T H  
 U O E S O I E R F Z C L O I L R L E  
 G Q S P R O J R U X O Y V P O N S X  
 K L G E P Q R M T C R O Y T U D R N  
 F X Z Z M E T H C S W O A J Q O O F  
 N I N I F A P O S T A M B A S I L H  
 O N G N H H R L F U O M S E K P C T  
 I W P N P B S Y L T M R T D H A T G  
 N F A I L D Q I N E M E R S E A X S  
 O O Q A E P E R D N B D A P I K T L  
 S W E E T C O R N A K N W A J R V Y  
 C U C U M B E R O C R E B E V C H P  
 Y R R E B E U L B E U V E P A C U C  
 D L N C U V J U Y P Z A R C P M C V  
 O T A T O P T E E W S L R O P C C Z  
 U X X M U S C A D I N E Y K E B M N  
 H S A U Q S K Q Q B O T I Q K I K O  
 X G A X D P I L U T G N Q Z V G N G



basil  
 broccoli  
 fig  
 mushroom  
 peach  
 radish  
 squash  
 sweet potato  
 zinnia

bell pepper  
 Christmas tree  
 lavender  
 onion  
 pecan  
 rose  
 strawberry  
 tomato

blueberry  
 cucumber  
 muscadine  
 pea  
 pumpkin  
 rosemary  
 sweet corn  
 tulip



Farming is the  
oldest job in  
the world!



# WORD SEARCH



## Beekeeping

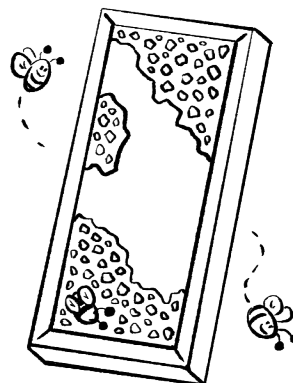
B S E M I B V I Y V W P J S H A R U  
 A U Y Q E Z Y E P E S K V H O P E Q  
 A F E E K T S M I E H I V E N I P R  
 D B B H S U R B M L U R P G E A A U  
 V O K L T Z K A W E C M X X Y R R O  
 X F E P N E R X A E P Q H T C Y C M  
 N I R W E F K B X W L W O U O Y S D  
 K C D P F O U F O A V R P W M B J V  
 M R E Q Z T F R M M R C R S B Z Z E  
 Y R S X J U K L K E S U I T M X E Y  
 N N G D F E B E K N E L L O P Q N O  
 K E O F R A S O M C N G S D T Y O B  
 R P E L T N M T M U O B K U V S R Y  
 R K L U O S A D F H Y G Q I P G D M  
 J I H E Q C W L D H O Z R U T W U D  
 D H F N M T D Q L Z G N Q K D Y I L  
 R L U A Z F S W U R L S E U E G G I  
 W C J Y Y Z U W V B G R H Y H J Y F



apiary  
 colony  
 hive  
 keeper  
 scraper  
 veil

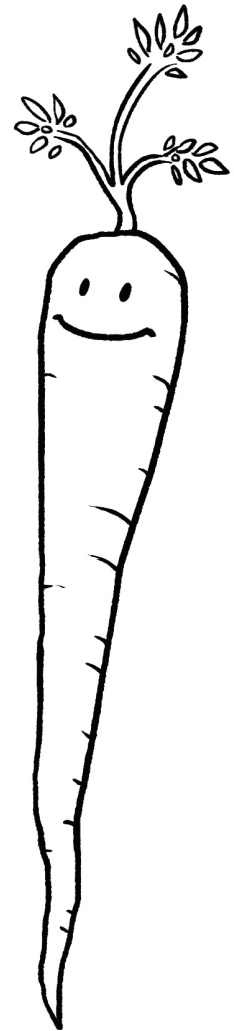
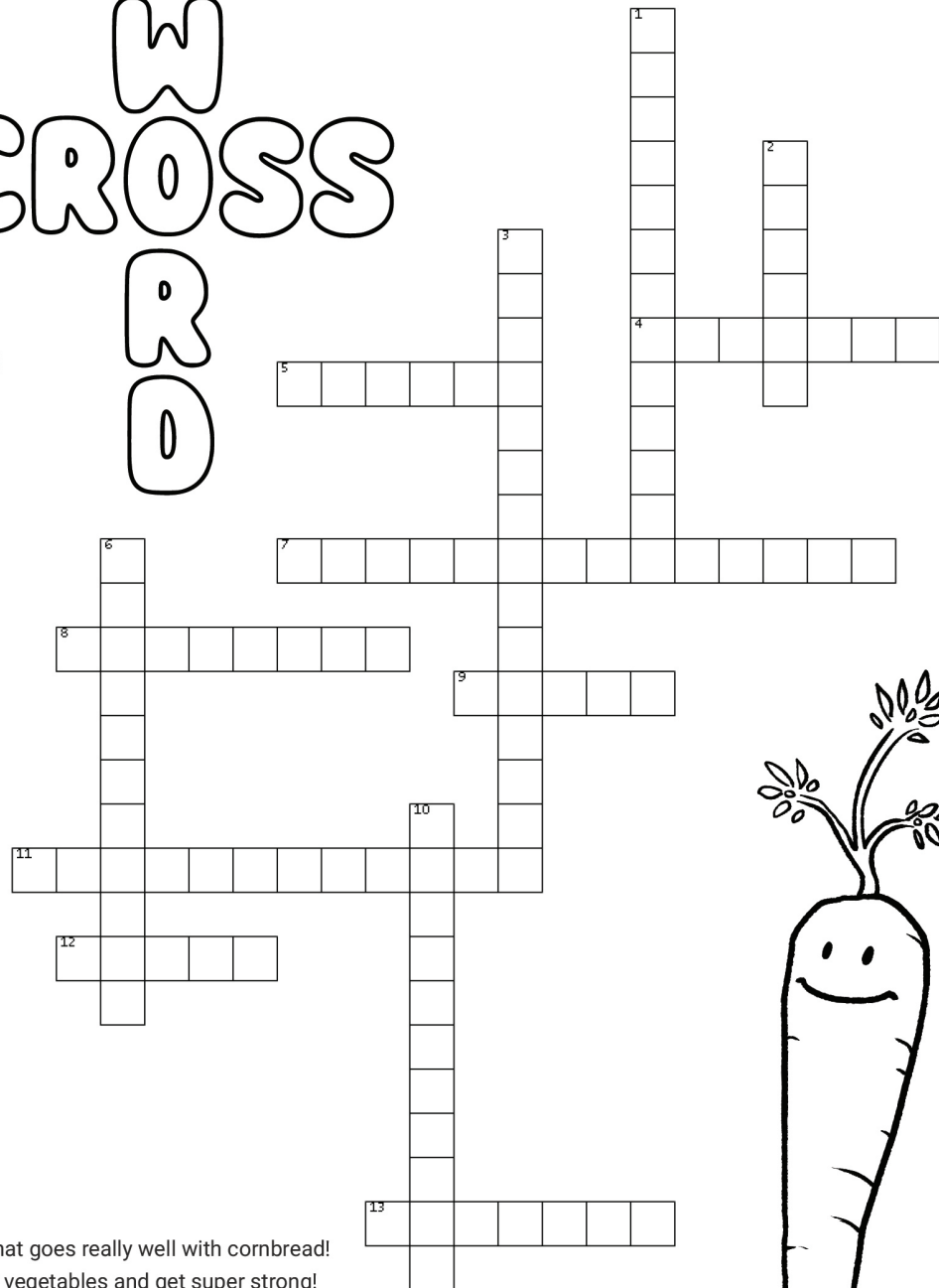
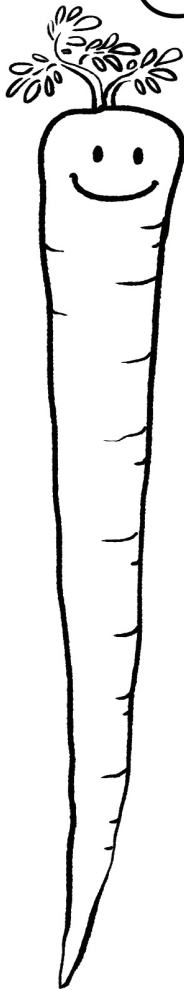
beehive  
 drone  
 honey  
 pollen  
 smoker  
 wax

brush  
 frame  
 honeycomb  
 queen  
 suit  
 worker



When it's stored properly,  
honey never goes bad!

# W CROSS WORD



## ACROSS

4. A leafy vegetable that goes really well with cornbread!
5. You eat these leafy vegetables and get super strong!
7. You decorate them with ornaments and put presents under them.
8. These round, orange fruits make really good jack-o-lanterns!
9. Bees make this in their hives. Bears love to eat it too!
11. These plants are grown in an indoor space. From little baby seeds to grown up plants!
12. Used for cooking, insect repellent, and fragrances. Basil, cilantro, and lavender are examples.
13. Usually, they are long and orange. Rabbits love to eat them.

## DOWN

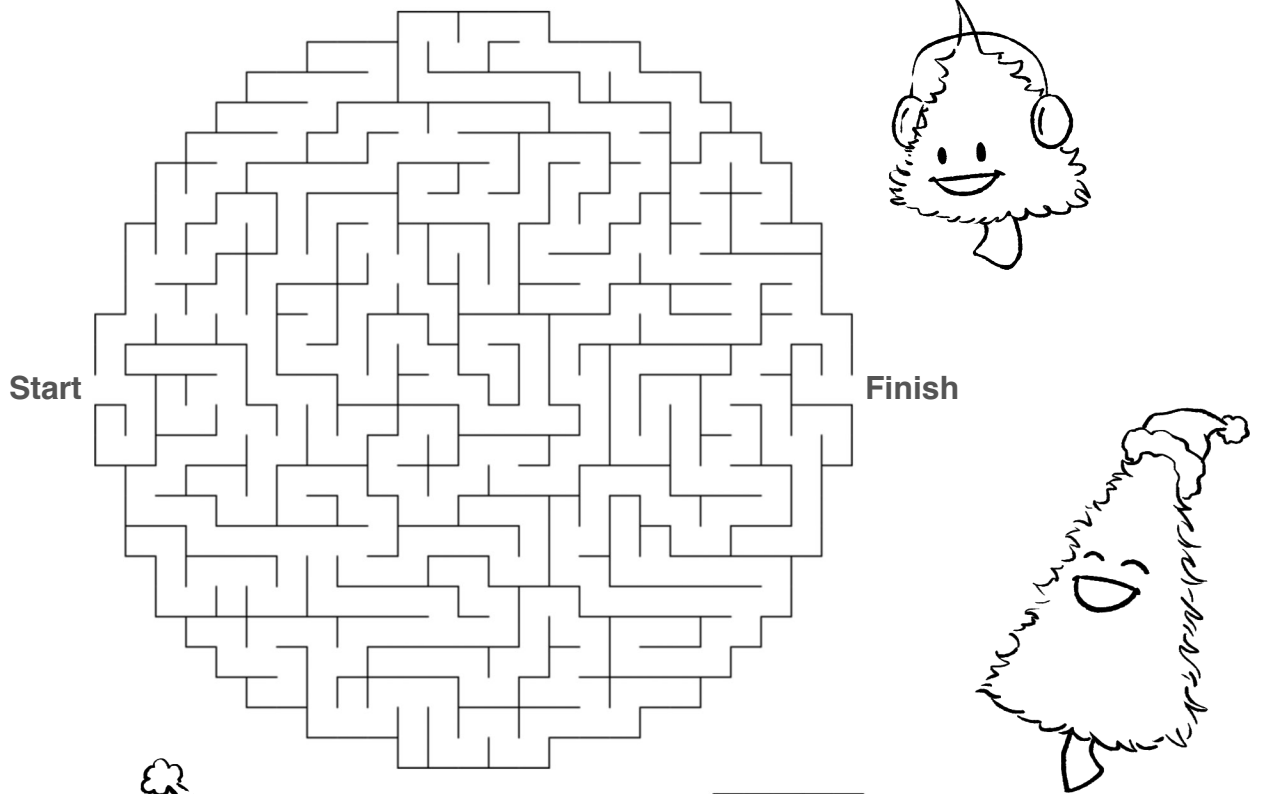
1. They are orange on the inside, and you can make fries out of them!
2. A type of nut that grows on trees. They make a really good pie too!
3. They smell so good and come in a bouquet!
6. A tiny blue fruit that grows in Mississippi. They are "berry" good!
10. A commonly red, flowering plant used in Christmas decoration.

## Word Bank

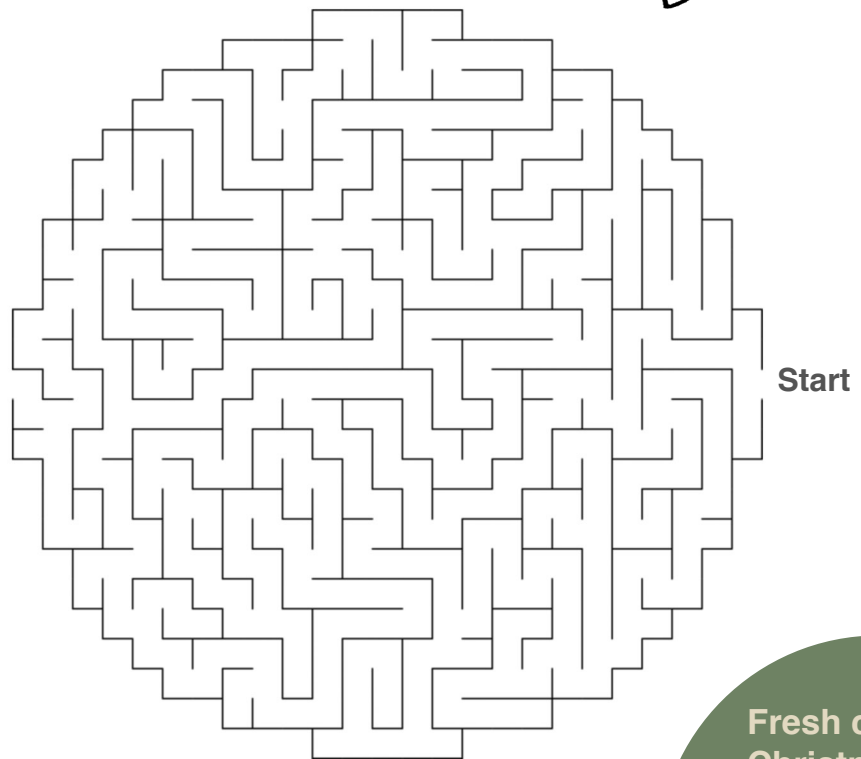
Sweet Potatoes Pecans Fresh Cut Flowers Blueberries  
Poinsettias Carrots Herbs Nursery Crops Honey  
Pumpkins Christmas Trees Greens Turnips

Carrots can be  
all kinds of colors.

# CHRISTMAS TREE MAZE



Finish



Start



Fresh cut Christmas trees can drink about a gallon of water a day.

# FIND THE DIFFERENCE

Can you spot 5 differences between the 2 pictures?



Herbs can be used  
to make different  
teas. Yum!



# FIND THE DIFFERENCE

Can you spot 5 differences between the 2 pictures?



The blueberry is the state fruit of Mississippi.

# FIND THE DIFFERENCE

Can you spot 5 differences between the 2 pictures?



Pecans are  
available  
year round.

# FIND THE DIFFERENCE

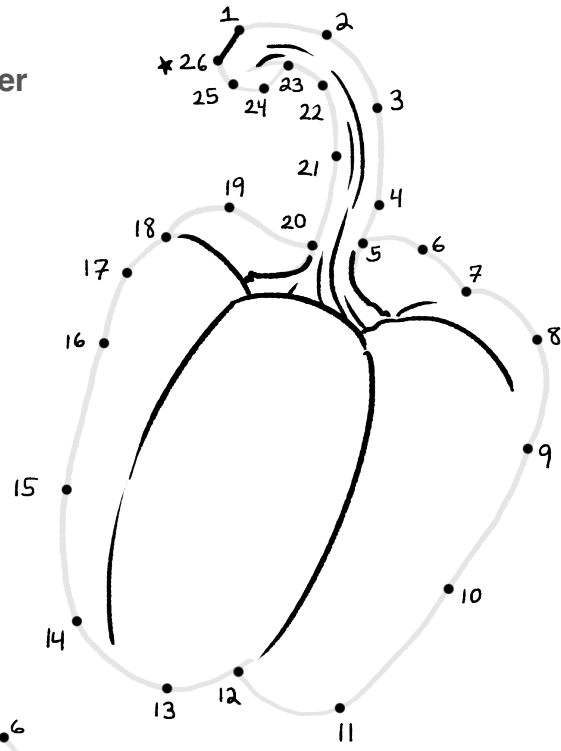
Can you spot 5 differences between the 2 pictures?



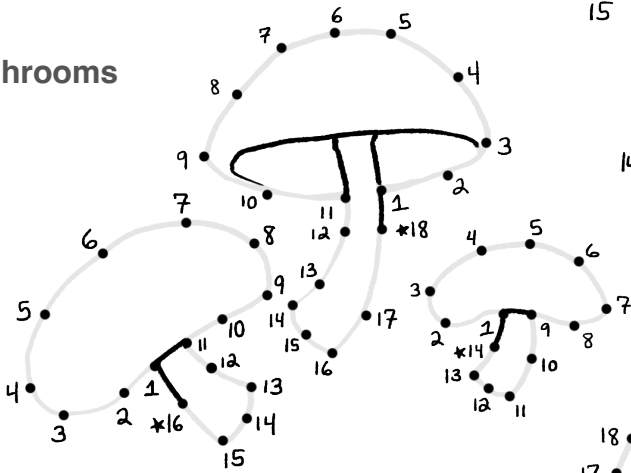
Mississippi has over a dozen  
tasty, healthy specialty crops.

# CONNECT THE DOTS

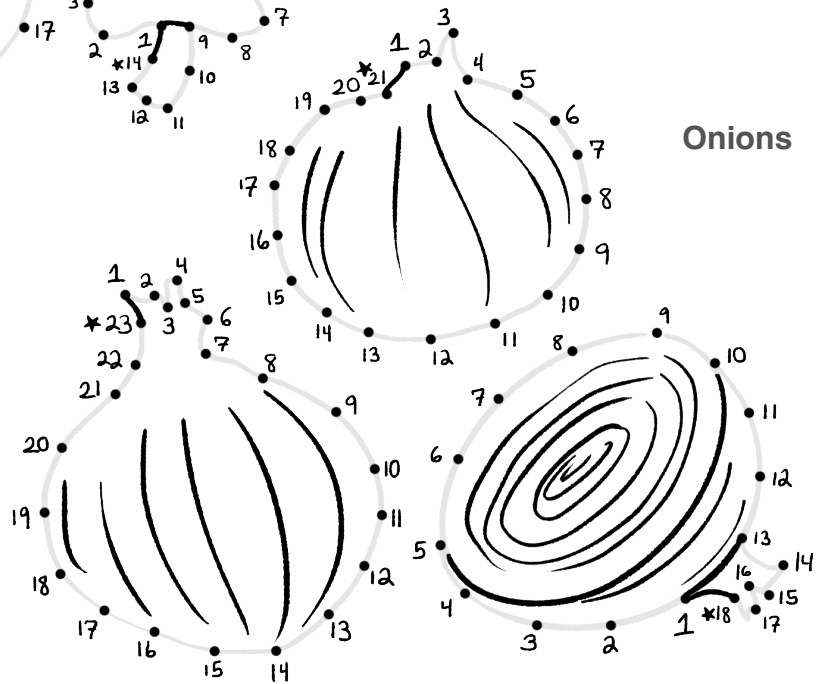
Bellpepper



Mushrooms

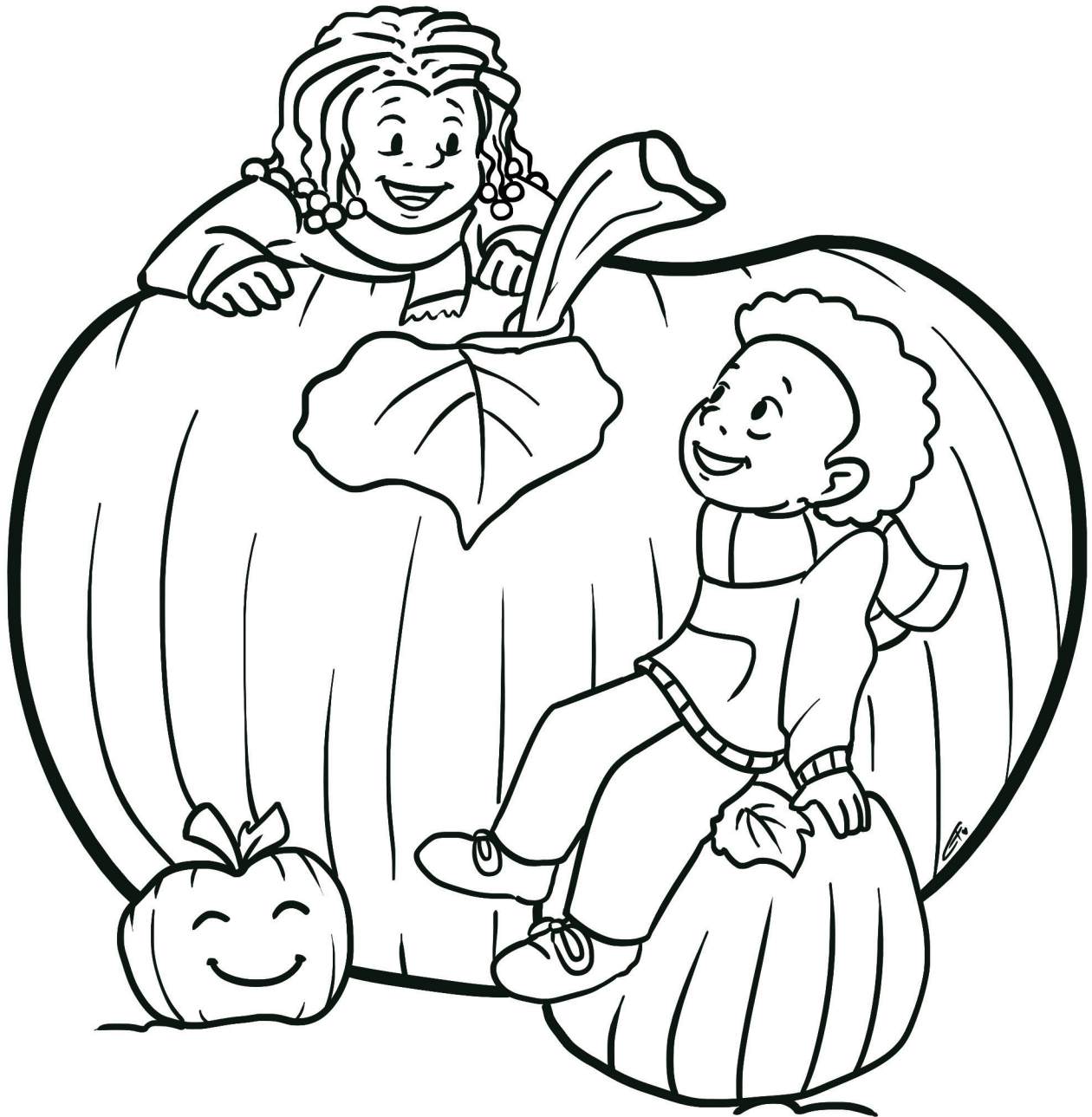


Onions



Herbs bring a fresh smell everywhere they go.

# COLORING PAGE

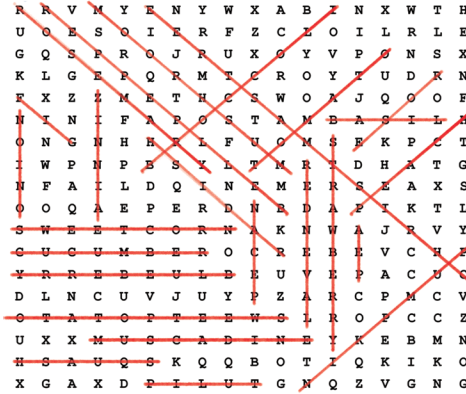


Rotating a pumpkin while growing helps maintain its shape!



# ANSWER KEY

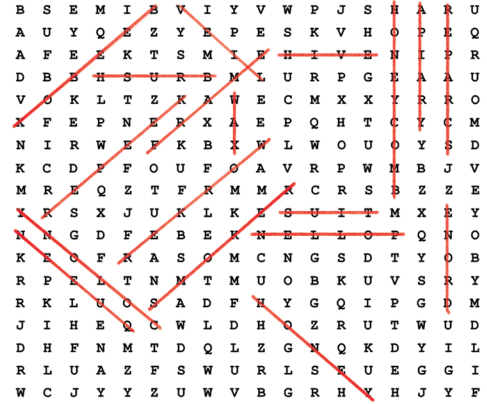
## Word Search: Mississippi Specialty Crops



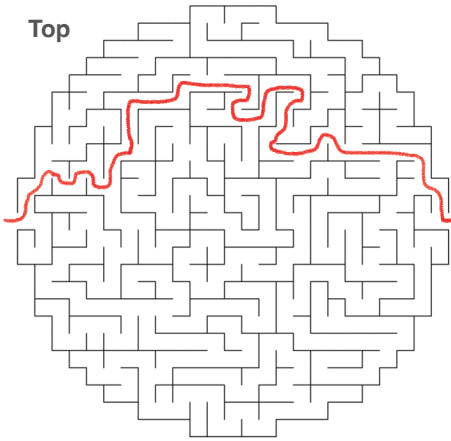
### FILL IN THE BLANK

- 1, 5: shovel
- 2, 6: seed
- 3, 7: water
- 4, 8: sunlight

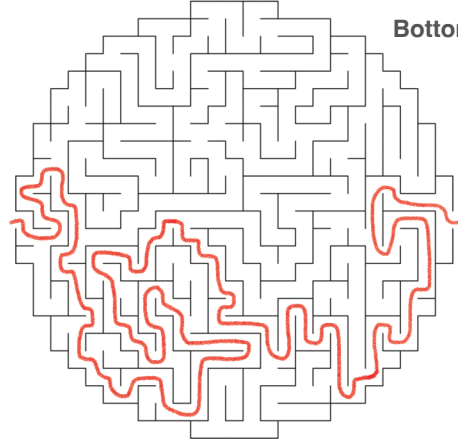
## Word Search: Beekeeping



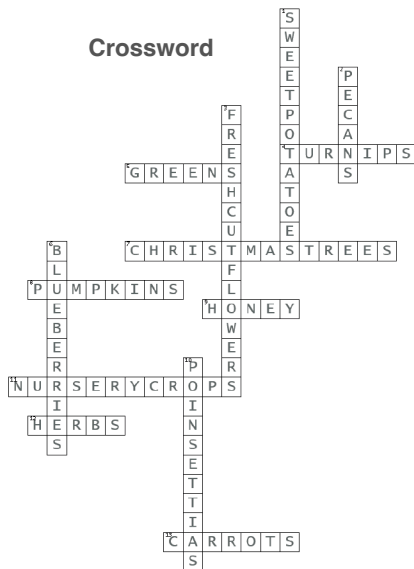
Top



Bottom



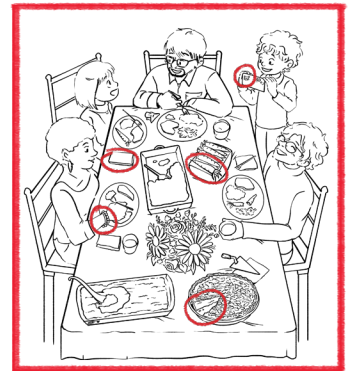
## Crossword



## Find the difference Tea Party



## Find the difference Family Dinner





## SOURCES

“Carrots | Mississippi State University Extension Service.” Msstate.edu, 2020, extension.msstate.edu/vegetable-gardening-mississippi/vegetable-varieties/carrots.

Coker, Christine E. Easy-To-Grow Herbs for the Landscape. 2021.

DelPrince, James M. The Professional Florist’s Manual for the Care and Handling of Fresh-Cut Flowers and Foliage. 2023.

DelPrince, James M. Using a Knife to Cut Fresh Flowers. 2017.

Fruit. “Fruit.” Msstate.edu, 2020, extension.msstate.edu/agriculture/crops/fruit. Accessed 18 Nov. 2024.

“Greens.” Msstate.edu, 2020, extension.msstate.edu/crops/commercial-horticulture/greens.

“Growing Pumpkins for the Home Garden | Mississippi State University Extension Service.” Extension. msstate.edu, extension.msstate.edu/publications/publications/growing-pumpkins-for-the-home-garden.

“Mississippi Sweet Potato Council.” Mississippi Sweet Potato Council, 2024, www.mssweetpotato.org/home.html, [https://doi.org/10\\_3461/v2](https://doi.org/10_3461/v2).

Pennington, Jay. “Frequently Asked Questions - Mississippi Pecan Growers Association.” Mississippi Pecan Growers Association, 14 July 2024, mspecans.org/faq/.

“Resources - Mississippi Beekeepers Association.” Mississippi Beekeepers Association, 18 Aug. 2024, mshoneybee.org/resources/.

“Southern Christmas Tree Association - Alabama Louisiana Mississippi Choose and Cut Christmas Trees.” Southernchristmastrees.org, 2024, www.southernchristmastrees.org.

“Southern gardening: Perfect fit tomatoes.” Mississippi State University Extension Service. (2021, July 11). <http://extension.msstate.edu/southern-gardening/video/2021/perfect-fit-tomatoes>

“Sweet Potatoes.” Msstate.edu, 2020, extension.msstate.edu/agriculture/crops/sweet-potatoes.

“Turnips-Rutabagas.” Extension.msstate.edu, 2020, extension.msstate.edu/vegetable-gardening-mississippi/vegetable-varieties/turnips-rutabagas.

“Watermelons” | Mississippi State University Extension Service. (n.d.). <http://extension.msstate.edu/agriculture/crops/watermelons>

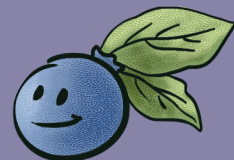
Does Honey Go Bad? | Mississippi State University Extension Service. (2020).Msstate.edu.<https://extension.msstate.edu/blog/does-honey-go-bad>

# FRESHLY PICKED

## MS Specialty Crops

Funding for this project was made possible by a grant from the U.S. Department of Agriculture (USDA) Agricultural Marketing Service. Its contents are solely the responsibility of the authors and do not necessarily represent the official views of the USDA.

[msfreshlypicked.com](http://msfreshlypicked.com)



Mississippi Department of  
Agriculture and Commerce  
Andy Gipson, Commissioner  
[Mdac.ms.gov](http://Mdac.ms.gov)

